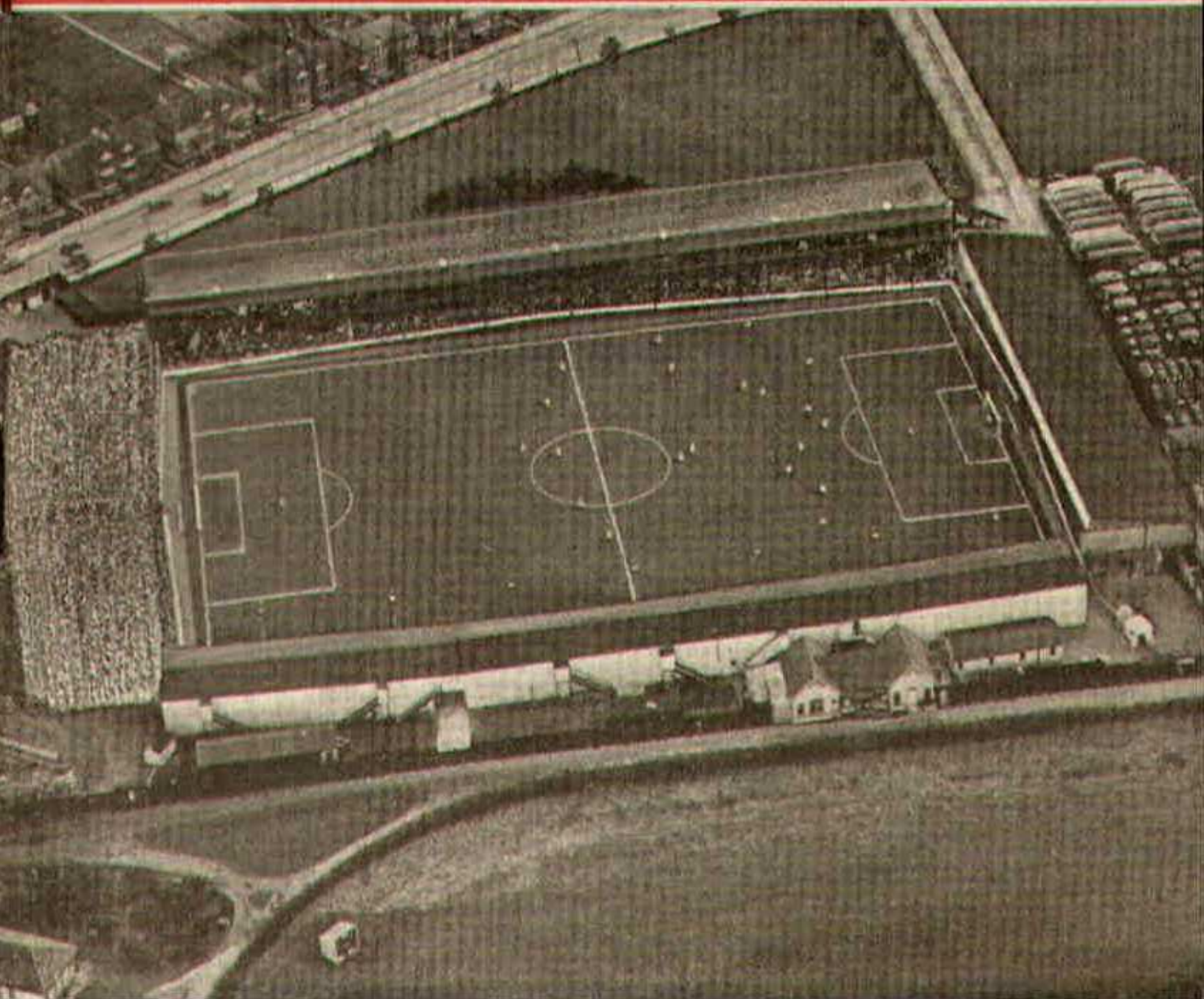


SWINDON TOWN



FOOTBALL CLUB

OFFICIAL PROGRAMME 6d.



**FURNITURE AND FURNISHINGS
OF CHARM AND DISTINCTION**



CARPETS - FLOORCOVERINGS
LOOSE COVERS - CURTAINS
SKILLED WORKSHOP REPAIR SERVICE
AND REMOVALS



Contractors to Government Departments, Hospitals
and Borough Councils

MILLS & MERRICKS LTD.

16-17 BRIDGE STREET, SWINDON

TELEPHONE 5365/6

SATURDAY, 8th SEPTEMBER, 1962

Division III

SWINDON TOWN

v.

HULL CITY

Kick-off 3 p.m.

REFEREE:

Mr. J. R. LOYNTON (Solihull)

LINESMEN:

Red Flag -

Mr. R. L. J. HAMBLIN (Cheltenham)

Yellow Flag -

Mr. R. C. STRETCH (Shaftesbury)

for fine printing
you should have
a fine printer

BOROUGH PRESS (SWINDON) LTD

Maylott Studios

For **GROUP & SPORT** Photographs

Official Photographer to
Swindon Town Football Club

31 FARINGDON ROAD

TEL. 22792

NOTTON'S CAFE

COUNTY ROAD

200 yards from Ground

RIGHT ON THE BALL

C. DUNN & SON

BUILDERS & DECORATORS

Alterations, Renovations, Conversions

Plumbers & Sanitary Engineers

503 CRICKLADE ROAD

TEL. 22522

LEESE, ING & Co. Ltd.

Mineral Water and
Squash Manufacturers

Lansdown Rd., Swindon

Telephone 22744

"COALI"
"COALI"
"COALI"

J. WILMER

**ST. MARGARET'S ROAD
SWINDON**

Telephone 22535

L. Wollen

OFF LICENCE

WINES and SPIRITS

Arkell's Ales and Stout

373 Cricklade Rd., Swindon
Deliveries Daily Phone 3508

SWINDON TOWN FOOTBALL COMPANY LIMITED

Registered Office: COUNTY GROUND, SWINDON.

Directors:

Mr. W. J. CASTLE (Chairman)

Mr. H. E. LANE (Vice-Chairman)

Mr. B. T. HAMILTON (Hon. Treasurer)

Messrs. C. CHANDLER, J.P., J. DAVIES,

R. FRICKER, C. J. GREEN, F. PLYER, H. WILLIAMS and K. H. WILMER

Manager: B. J. HEAD

Secretary: R. A. MORSE

VOL. 13

SATURDAY, SEPTEMBER 8th, 1962

No. 3

CLUB NOTES

After the unfortunate result of the Northampton game, many feared the worst, with three consecutive, difficult away matches. The first at Coventry resulted in a 0-2 defeat. This was followed by a visit to Queen's Park Rangers, at present occupying top position in the league. The result, a very creditable 2-2 draw. Could we follow up this performance with a repeat at Brighton on the Tuesday? Well we gained another point, our third away from home, as the result of three draws on opponents' grounds. The changes made in the composition of the team for the last two games seem to have brought about the desired results. So to this afternoon's game may we return to the "winning standard", and continue in that vein on Tuesday versus Brighton.

In our last programme we stated we would welcome views from supporters — "the man on the bank". Several letters containing helpful suggestions have been received, as far afield as Stroud in one instance. Most writers asked for the compilation of records of appearances, goal-scorers, etc. Obviously these could not be produced until several games

WILSONS (SWINDON) LTD.

BUILDERS OF MODERN ATTRACTIVE
HOUSES AND BUNGALOWS

Enquiries to:

Head Office: 90 COMMERCIAL ROAD, SWINDON 6361

Site Office: COVENTRY FARM ESTATE, WROUGHTON 271

Site Office: QUEENSFIELD ESTATE, STRATTON S.M. 3405

The Rendezvous of all Sportsmen -

THE CROWN INN

(Host: Frank Plyer)

Arkell's Best Ales : Fully Licensed

Snacks, etc.

Stratton St. Margaret Tel. 2339

Always at your service

L. BIBBY

For all Types, Rags, Iron and Metal,
etc. Spot Cash Paid. Please Tel.
2101 and our van will call.

THE PADDOCK, ERMIN STREET
STRATTON ST. MARGARET

FISH

POTATOES

T. QUALITY (Swindon)
LTD.

Wholesale Merchants

COLLEGE STREET

TEL. 5446/7

For Best Quality Wet Fish

9 a.m. - 6 p.m. (except Mondays)

YORK ROAD FISHERIES

Frying Mid-day Tuesday, Thursday,
Friday and Saturday

Phone 3680

MARSHGATE GARAGE

MOTOR ENGINEERS :: ROOTES GROUP DEALERS

STRATTON ROAD - SWINDON - WILTS.

Tel. Swindon 22788

TWO MINUTES FROM GROUND

CLUB NOTES - continued

had been played, and we hasten to assure everyone that we shall certainly give full details of all our teams. Another suggestion was the production of an autobiography of a certain player each week. This has been tried on previous occasions, but most players are very diffident regarding their private lives and history, so at the moment we cannot follow up that suggestion.

We thank all supporters for their excellent letters and ideas.

From Week 13, the competition being run by the Club will revert to the system operated last season. This is being done because the present system tends to conflict with the Supporters' Club weekly competition. This is the very last thing we want to happen. Over the past five years the Supporters' Club have handed over to the Football Club the sum of £83,000 obtained from competitions. Without this money, Swindon Town Football Club would not be in a position it is today. We trust the Supporters' Club will continue to flourish.

The Club competition will be run on "Jackpot" lines. Two tickets will cost one shilling, and all prizes will be drawn from the "Drum" at half-time, and can be obtained after the game. It is hoped to award the following: £100, £50, £20, £15, £10 and £5; so be sure to buy your tickets. Remember all prizes drawn at half-time, so claim your money after the match.

In this programme we reproduce the team photograph. We are sure all spectators will be most interested. The goal-

PANKHURST

The Palace - Gorse Hill - Swindon

MOTOR CYCLE - SCOOTER AND
THREE-WHEELER SPECIALISTS

Open Mon. to Sat. 9 a.m. - 8 p.m.

Phone 5466

Their kit is supplied by

SWINDON SPORTS CENTRE

WHO HAVE THE BEST SELECTION

Tel. 4270

114 COMMERCIAL ROAD

IVOR MESSENGER & SONS

High-Class Family Butchers

QUALITY WITH ECONOMY :: FAIREST PRICES IN TOWN

1 COLLEGE STREET, SWINDON

Tel. 5647

£10 **TYPEWRITERS** from **£10**

FULLY GUARANTEED

Also full selection new standard and portable typewriters
OFFICE EQUIPMENT

DOBELL SHEARMAN
& Co. Ltd.

26 High Street & 33 Faringdon Road, Swindon.

Tel. 4961/2

CLUB NOTES - continued

keepers may cause some discussion; the smaller of the two is Hicks, an apprentice professional. The other was on trial on that occasion. O'Hara was ill in bed with tonsillitis and Turner had not re-signed at the time.

It is hoped to produce more photographs, even some of the "backroom boys". No doubt there are people working for the Club whom supporters do not know. I wonder how many of our spectators today would recognize the two groundsmen, or the chief gate steward, or even members of the Board of Directors (no comment!).

This afternoon we once again have the pleasure of entertaining Hull City. We last played them on Saturday, 16th September, 1961. Result 1-1. Swindon's team: Burton; Jones, Trollope; Morgan, Owen, Woodruff; Corbett, Summerbee, Smith, Hunt, R., Jackson.

Mr. Reg Wise, proprietor of Wise's Catering Service, has kindly donated today's Match Ball. He has been Club Caterer for the past fourteen seasons. Always a keen sportsman, he played "Swindon Wednesday" in his youth, and with his mother inaugurated under 16 and under 18 League Football in Swindon 40 years ago. He has been an active member of the Supporters' Club for many years and is a member of the Company.

OUR VISITORS

Today we welcome the Directors, Officials and Players of Hull City Football Club to the County Ground. On the last occasion the two teams met at Swindon the result was a 1-1 draw. Our goal was scored by R. Hunt.

Details of the Hull players from whom today's team will be selected are as follows:—

GOALKEEPERS

Fisher, J. B. (Jim).

Born at York. Signed as an amateur after completing his National Service. Signed full-time professional forms in November 1955. Has proved a very capable 'keeper.

Granger, M. (Mick).

Signed from York City during the close season. Has a reputation of a fearless and agile goalkeeper.

FULL-BACKS

Bulless, B. (Brian).

Born in Hull, he joined the club as an amateur in 1948, signing professional in season 1950/51. A fine ball player, fast and strong.

Davidson, A. (Andy).

A Scot who joined Hull City in 1948. A great club man who has been appointed club captain for Season 1962/63. A fearless player, both in attack and defence. Andy, or Jock, as he is known locally, has fought his way back to fitness after having sustained broken legs on three occasions.

Garvey, B. (Brian).

Another local-born player, signed professional after completing his National Service and playing with the club as an amateur from 1953 to 1958. A player who is also at home in any of the half-back positions.

For Quality FLOWERS - FRUIT - VEGETABLES
also FROZEN FOODS

CLARKE'S of Old Swindon

Proprietors: A. G. G. and J. A. W. HUNT

64 DEVIZES ROAD - SWINDON

Phone 22337

ORDERS DELIVERED

SEA VIEW CAMP

Camp Road, Wyke Regis, Weymouth. Tel 3351

Site overlooks Chesil Beach - Ideal for Camping Parties

Also Modern Caravans for Hire

Swindon Bacon Curing Co. Ltd.

Specialists in

BACON - PORK - COOKED HAM

50 FLEET STREET, SWINDON

Telephone 22122

Meet your friends for an enjoyable evening at

THE KINGSDOWN INN

(Host A. W. Vann)

FULLY LICENSED - ARKELL'S BEERS

SNACKS - Etc.

STRATTON ST. MARGARET

Tel. 3283

OUR VISITORS - continued

Brown, M. J. (Mike).

A strong young player who has graduated through the junior sides. Became a professional in 1958 after four years as an amateur with the club.

HALF-BACKS

Feasey, P. C. (Paul).

Another local player who gained valuable experience in the junior sides as an amateur. Signed after one year as an amateur in 1950. A very powerful player, both in defence and attack.

Collinson, L. (Les).

Joined the club in 1953 as an amateur and signed professional after completing National Service in 1956. A very capable player. Born in Hull.

Milner, M. (Mike).

A young player who is still a part-time professional with the club. Made six 1st XI. appearances last season and showed very great promise.

McMillan, E. (Eric).

Born at Beverley, near Hull. He joined the "Tigers" from Chelsea in June 1960 after 2½ seasons with the London club. Missed only four 1st XI. games last season.

Sharpe, L. T. (Len).

Signed from Scunthorpe United during the close season. Can also play inside forward.

FORWARDS

Clarke, D. (Doug).

Joined Hull City from Bury in 1955 and has been a regular in the 1st XI. ever since. Fast and has a terrific shot in either foot.

OUR VISITORS - continued

King, D. J. (David).

Joined the Hull City groundstaff on leaving school in 1957. Signed professional on his 17th birthday. Young, a good schemer, he has the attributes of becoming a really first class player.

Chilton, C. R. (Chris).

Locally born, he also joined the club on leaving school. Chris has attracted the attention of many leading clubs. Just 19 years of age, he has already had two full seasons of League football. Well built and a clever player, he has a bright future.

Henderson, R. (Ray).

Signed from Middlesbrough in June 1961. A player who can make the most of a "half-chance". An intelligent positional player with a good shot.

McSeveney, J. H. (John).

Joined the "Tigers" from Newport County in the 1961 close season; he has become a firm favourite with the "fans". Nicknamed John McUTILITY, as he filled a fair number of positions during the season when other players were injured, including goalkeeper during one match. A great club man whose fitness and natural ability at the game has served the "Tigers" well. Top scorer last season with 14 goals.

Price, T. D. (Dudley).

Signed from Southend United in September 1960. A former Welsh schoolboy International. Has a very good shot in either foot and is a fast and elusive type of player.

Shaw, A. (Alan).

Though small in stature, Alan has all the courage and ability to offset this. A speedy winger who never knows when he is beaten.

B. J. MARTIN & SONS LTD.

Butcher

**10 HIGH STREET
MARLBOROUGH
Phone 212**

**126 VICTORIA ROAD
SWINDON
Phone 4860**

CLARK BROS. (SWINDON) LTD.

**BUILDING AND CIVIL ENGINEERING
CONTRACTORS.**

SWINDON

Telephone: Swindon 3417/8/9

OUR VISITORS - continued

Simpkin, C. J. (Chris).

Signed professional early this year after serving as an apprentice professional. Mainly plays as a wing half and has shown great promise.

Taylor, A. M. (Arthur).

Signed from Goole Town, has had professional service with other clubs. Had to lay off soccer for a while, due to injury, but is now fully fit and is showing his old form. A fast and clever wing forward.

Wilkinson, W. (Billy).

Born at Stockton-on-Tees. Signed professional earlier this year. A strong attacking inside forward. Still in his teens, is showing all the potential of a real class player.

Johnson, C. D. (David).

Another young apprentice-professional on the club books. Hails from nearby Nafferton and looks like developing into a very useful player.

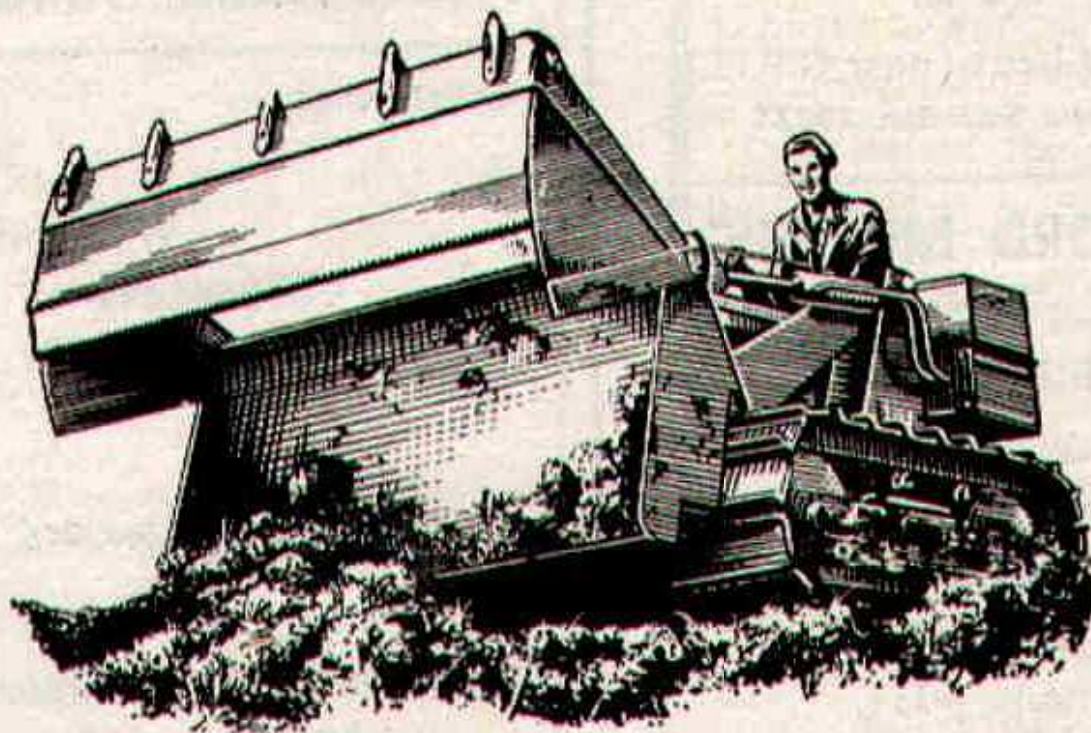
DIVISION III FIXTURE LIST

Date	Opponents	Ground	Result
August 18	BARNSELY	(A)	1-1
21	COVENTRY CITY	(H)	4-1
25	NORTHAMPTON TOWN	(H)	2-3
28	COVENTRY CITY	(A)	0-2
September 1	QUEEN'S PARK RANGERS	(A)	2-2
4	BRIGHTON and HOVE ALBION	(A)	1-1
8	HULL CITY	(H)
11	BRIGHTON and HOVE ALBION	(H)
15	CRYSTAL PALACE	(A)
18	CARLISLE UNITED	(A)
22	WREXHAM	(H)
25	CARLISLE UNITED	(H)
29	HALIFAX TOWN	(A)
October 2	BRISTOL ROVERS	(H)
6	WATFORD	(H)
9	BRISTOL ROVERS	(A)
13	BRISTOL CITY	(A)
20	READING	(H)
27	PORT VALE	(A)
November 3	(1)		
10	MILLWALL	(A)
17	SOUTHEND UNITED	(H)
24	(2)		
December 1	NOTTS COUNTY	(H)
8	BOURNEMOUTH and B.A.	(A)
15	BARNSELY	(H)
22	NORTHAMPTON TOWN	(A)
26	BRADFORD	(A)
29	BRADFORD	(H)
1963			
January 5	(3) COLCHESTER UNITED	(A)
12	QUEEN'S PARK RANGERS	(H)
19	HULL CITY	(A)
26	(4) SHREWSBURY TOWN	(H)
February 2	CRYSTAL PALACE	(H)
9	WREXHAM	(A)
16	(5) HALIFAX TOWN	(H)
23	WATFORD	(A)
March 2	BRISTOL CITY	(H)
8	(6) READING	(A)
16	PORT VALE	(H)
23	SHREWSBURY TOWN	(A)
30	(S.F.) MILLWALL	(H)
April 6	SOUTHEND UNITED	(A)
12	PETERBOROUGH UNITED	(H)
13	COLCHESTER UNITED	(H)
15	PETERBOROUGH UNITED	(A)
20	NOTTS COUNTY	(A)
27	BOURNEMOUTH and B.A.	(H)
May 4	(FINAL)		

H. HIBBERD LIMITED

40 NEWPORT STREET - SWINDON

PLANT HIRE



TRACTORS and SCRAPERS

BULLDOZERS

DROTT SHOVELS

J.C.B. and DINKUM DIGGERS

ROAD ROLLERS

TELEPHONE: SWINDON 6125

Hatton's Newsagency

A. J. D. Woodhouse and A. Smith

**Newsagents :: Tobacconists
Confectioners**

Agents for Wessex School of
Motoring

Main Booking Agents for Millers
Coaches

6 Regent Circus (near G.P.O.)

Telephone Swindon 22731

HULFORD MOTORS Ltd.

SELF DRIVE HIRE

Fleet of 1962 Fords
Populars - Anglias - Consuls

SHRIVENHAM ROAD

(200 yards from Football Ground)

Phone 4934

Large Car Park available

For High Class
Central Heating, Plumbing
Painting and Decorating
Electrical Installations
and Repairs

**NORTH WILTS
Sanitary & Heating
Co. Ltd**

NEWPORT ST., SWINDON

Phone 5373/4

WARNES (Swindon)

Electrical Contractors - Radio

Contractors to SWINDON TOWN

**160 COUNTY ROAD, SWINDON
9 SWINDON STREET, HIGHWORTH
7 CLIVE PARADE, SWINDON**

RIGHT WING

SWINDON
Towner

Wollen (2)

Morgan (4)

Owen (5)

Darcy (7)

Hunt (8)

Smith (9)

Swindon Colours:
RED SHIRTS, WHITE SHORTS

**FOOTBALL
PINK**

McSeveney (11)

King (10)

Chilton (9)

McMillan (6)

Feasey (5)

Bulless (3)

D

LEFT WING

Fisher
HULL CITY

WARNES T.V.

TO BE SU

51 Commercial Road - Swindon

and Branch

Swindon) LTD.

s - Radio and Television

ON TOWN FOOTBALL CLUB

PHONE 6346/7
PHONE 379
PHONE 6346/7

SWINDON
Turner

LEFT WING

Trollope (3)
Woodruff (6)
Smart (10) Jackson (11)



These teams are subject to alteration

Chilton (9) Simpkin (8) Clarke (7)
Casey (5) Collinson (4)
Davidson (2)

Fisher
WALL CITY

RIGHT WING

T.V. RENTALS

BE SURE

- Swindon - Phone 6486

Branches

McILROYS

RESTAURANT

for morning coffee, luncheon and afternoon tea - in pleasant surroundings - you will find McIlroys are top of the 'league'.

Full table service, best Beers and Wines. Parties and Functions catered for.

McIlroys Restaurant

64-72 Regent Street
Tel. 5294



THE ALCOHOL FUEL

COATE GARAGE

REPAIRS - OVERHAULS - WELDING
SERVICING - REBORING - TYRES

Props. E. V. & W. H. Mattick
Marlborough Rd., Swindon

SUPPORTERS' CLUB NOTES

As mentioned in earlier notes, the Annual General Meeting of this Club has recently been held.

We were pleased to welcome our new President, Mr. J. Sutton of 245, Marlborough Road, Swindon. He enters office with an enthusiasm that augurs well for the future of the Club, and for the work of the Committee; an inspiring lead is infectious.

The Vice-Presidents were re-elected en bloc, and Mr. W. J. Mitchell continues as Chairman.

Mr. T. H. Smith, Vice-Chairman for several seasons past, felt unable to continue in that office, owing to other commitments, although the Committee will still have the benefit of his work as a member (or Minister without Portfolio).

The new Vice-Chairman is Mr. D. Pearce, whose wife, Mrs. Marion Pearce, has given extremely efficient service to the Committee for several seasons, as Honorary Membership Secretary.

She hopes for a heavy post when our readers have completed and forwarded the Membership Application form which appears in this number.

Mr. J. J. Plunket remains Honorary General Secretary, while Mr. F. N. Deane, with Mr. and Mrs. T. H. Stenning, will again be in charge of the weekly competition.

HAVE YOU SIGNED ON YET

FOR
YOUR

SWINDON ECHO

4d.
WEEKLY

IF NOT THEN DO SO AT YOUR LOCAL NEWSAGENT
AND JOIN OUR GROWING TEAM OF READERS

For your pleasure try

RIVERSIDE LECHLADE LTD.

Tea Room and Gardens - Boating

4 Berth and 2 Berth Cabin Cruisers for hire, also Motor Boats,
Camping Punts, Rowing Boats, Canoes, etc. Parties catered for.

PRIVATE CAR PARK

Telephone: Lechlade 229

Little & Co. Ltd.

Try us for
Clothes for all
the family on
all occasions

31-32 FLEET STREET
SWINDON

Tel. 22831

THE POPULAR MEN'S & LADIES'
COMPLETE OUTFITTERS

We have a
reputation for
Value & Service
that is second
to none

SEE THE LOVELY SELECTION OF
CHOCOLATES AND SWEETS
Greetings Cards a Speciality

CECIL GREEN

CONFECTIONER AND TOBACCONIST

13 VICTORIA ROAD

Telephone 4416

SUPPORTERS' CLUB NOTES - continued

Those are the Officials with whom the general public are most likely to come into contact — there are a number of other “odd bods” (writer of programme notes for instance) — working on the General Committee.

We are very grateful to the Directors and Management of the Football Club for allowing us this space in the programme, and thank the Editor for his kind remarks in the opening number.

It is hoped that those who have not yet renewed membership of the Club will do so without further delay, either by using the form on page 22, as suggested, or by applying personally at our Headquarters. As is well known, membership gives the right to participate in the draw for tickets for important matches, allotted to our Club, and also secures admission in the event of an “All-Ticket” Match at the County Ground.

In addition to the ordinary lapel membership badge at 1/3, we also have blazer badges at 6/-, car pennants at 1/6, caps at 5/- and mugs at 6/-.

Anyone interested is invited to call at our office to inspect the goods.

F. J. ROPER
DEVIZES RD.
SWINDON

Phone 22341

FERNDALE
FISHERIES
FERNDALE RD.
SWINDON

Phone 3614

SWINDON'S FINEST

FISH and CHIPS

CALL ON
YOUR
WAY
HOME

F. J. ROPER
CLIFTONIAN
38 WILLIAM ST.
SWINDON
Phone 3785

WE SHALL BE
WAITING
TO
SERVE YOU

Menu

Plaice
Hake
Cod
Skate

F. J. ROPER
HIGH ST.
WOOTTON
BASSETT

F. J. ROPER
CROSS HAYES
MALMESBURY

SWINDON TOWN F.C. SUPPORTERS' CLUB

To: The Honorary Membership Secretary,
91 Kingshill Road,
Swindon.

Please enrol me as a Member of the Club for Season 1962-1963. I enclose Membership Fee 6d. (and 1/3 extra for Badge*).

*Delete if not required.

Name

Address

.....

.....

If you are already a member, will you please hand this form to a friend.

This space is reserved for

EDWIN H. BRADLEY & SONS LTD.

Builders - Swindon

Eric

(E. Ayliffe)

GENTLEMEN'S HAIRDRESSER

57/59 Faringdon Road, Swindon.

Phone 4569

APPOINTMENTS MAY BE BOOKED IN PRIVATE SALON

ALSTON & YOUNG LTD.

121-123 CRICKLADE ROAD, SWINDON.

Tel. 6671

Scooter and Three-Wheeler Specialists

Main Agents - LAMBRETTA - VESPA - TROJAN

First class after sales service

Open daily 9.0 a.m. to 7.30 p.m.

SUPPORT YOUR HOME

CIVIL DEFENCE

Plays a vital part in saving lives

in PEACE or WAR

Particulars:

CIVIC OFFICES, SWINDON

**WISES CATERING
SERVICE**

(Reg. Wise)

Our Caterer for the past 14 seasons
Guarantees

**A GOOD CUP OF TEA AT THE
COUNTY GROUND**

A full range of Sweets & Cigarettes
at any of our five kiosks on your
way in. **ENJOY YOURSELF!!**

KEY OF THE BOARD

FIRST SECTION

- A—Arsenal v. Sheffield W.
- B—Birmingham v. Burnley
- C—Blackburn v. Aston Villa
- D—Blackpool v. Tottenham
- E—Bolton v. Ipswich
- F—Everton v. Leicester
- G—Leyton O. v. Manchester U.
- H—Manchester C. v. West Ham
- I—Nottingham F. v. Liverpool
- J—Sheffield U. v. Wolverhampton W.
- K—West Bromwich A. v. Fulham
- L—Chelsea v. Sunderland
- M—Derby v. Preston N.E.
- N—Huddersfield v. Cardiff
- O—Luton v. Stoke
- P—Newcastle v. Plymouth
- Q—Norwich v. Bury
- R—Southampton v. Charlton
- S—Walsall v. Grimsby
- T—Brighton v. Wrexham

SECOND SECTION

- A—Bristol R. v. Halifax
- B—Carlisle v. Crystal P.
- C—Reading v. Bristol C.
- D—Southend v. Bournemouth
- E—Bradford C. v. Darlington
- F—Crewe v. Doncaster
- G—Gillingham v. Stockport
- H—Lincoln v. Oldham
- I—Oxford v. Southport

BRETTS PET AND GARDEN SUPPLIES

32-33 COMMERCIAL ROAD

and

6 CROMWELL STREET - SWINDON

When thinking of your new
T.V. - Radio - Washing Machine - Refrigerator
make your **GOAL**

HOLMES & LUCAS

14 REGENT STREET - SWINDON

Stockists of all leading makes

Telephone 22526-4721

FOR ALL YOUR ANGLING NEEDS
CONSULT

FRANK WOODWARD

Swindon's Fishing Tackle Specialist

25 HAVELOCK ST., SWINDON
PHONE 3879

For **Paints** of Good Quality

H. S. HODGES & SONS (SWINDON) LTD.

CRICKLADE RD. - SWINDON
PHONE 22422

Dulux, Brolac, Friary, Valspar,
Wallcharm, etc.

SOUTHERN LAUNDRY

Co. Ltd.

Launderers and Dry Cleaners

STATION ROAD - SWINDON
TELEPHONE 4161

COMLEY'S

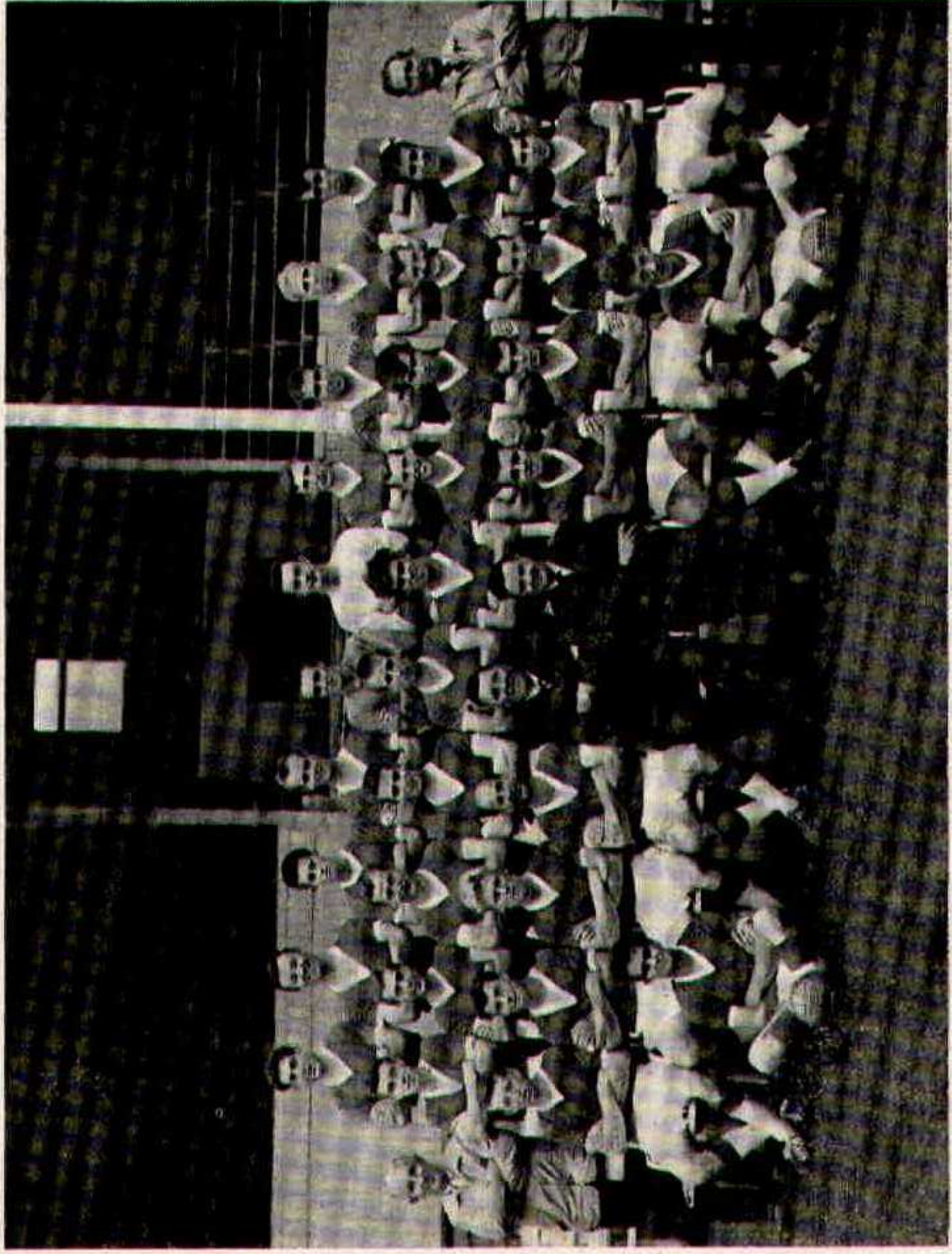
Modern Music Centre

26 HAVELOCK ST., SWINDON

RECORDS - MUSIC - INSTRUMENTS

Top Twenty 'Pops' always in stock
and wide selection of Jazz & Classics

Personal Supervision Phone 3874



Photograph by L. Maylott

SWINDON TOWN FOOTBALL CLUB, 1962-63

Back Row—

Rogers, Smith, Leggett, Jackson, Hicks, Graham, Summerbee,
Hellin, McPherson, Shergold.

Middle Row—

H. Cousins (Trainer), Smart, Dawson, Harvey, Chamberlain,
Atkins, Morgan, Woodruff, Wollen, Trollope, Lloyd,
J. Conley (Trainer).

Front Row—

Plumb, Peapell, Colsell, Owen, B. J. Head (Manager),
R. A. Morse (Secretary), Hunt, Darcy, Tabor, Harber.

Sitting—

Ling, Woolford.

DIVISION III LEAGUE TABLE

	P	W	D	L	F	A	Pts.
Queen's Park Rangers	6	4	2	0	22	8	10
Southend United	6	5	0	1	16	9	10
Port Vale	6	3	2	1	8	5	8
Watford	6	4	0	2	15	14	8
Millwall	6	2	4	0	16	6	8
Peterborough United	6	3	2	1	17	13	8
Colchester United	6	2	3	1	7	7	7
Coventry City	6	3	1	2	11	9	7
Brighton & H.A.	6	2	3	1	9	8	7
Wrexham	5	3	0	2	10	6	6
Northampton Town	4	2	1	1	9	7	5
Barnsley	6	2	1	3	6	9	5
Bristol Rovers	6	2	1	3	9	13	5
Swindon Town	6	1	3	2	10	10	5
Bristol City	6	1	3	2	9	9	5
Bournemouth	6	0	5	1	8	10	5
Reading	5	2	0	3	10	9	4
Bradford	5	0	4	1	7	9	4
Hull City	6	2	0	4	9	13	4
Shrewsbury Town	6	1	2	3	12	18	4
Notts County	5	2	0	3	11	9	4
Crystal Palace	6	0	3	3	6	13	3
Halifax Town	6	1	1	4	5	14	3
Carlisle United	4	0	1	3	6	14	1

**ADVERTISING SPACE
IN THIS PROGRAMME
TO LET**

Apply:-
SECRETARY,
SWINDON TOWN F.C.,
COUNTY GROUND, SWINDON

Have you purchased your ticket for the

**DEVELOPMENT
FUND
COMPETITION?**

TICKETS 1/- each

Draw at half-time today for

£100

other Prizes Monday to Friday

£20 EACH DAY

Results published daily in -

"Daily Sketch"

"Evening Advertiser" and

"Bristol Evening Post"

PARK DRIVE



for pleasure

PLAIN 20 for 3/5 TIPPED 20 for 2/10

PLAYERS APPEARANCES AND GOAL SCORERS

Division III

				Appearances	Goals
Turner	3	-
O'Hara	3	-
Wollen	6	-
Trollope	6	-
Morgan	6	-
Owen	6	-
Woodruff	6	-
Summerbee	1	-
Darcy	5	3
Hunt	6	1
Smith	6	2
Atkins	3	-
Smart	2	1
Jackson	6	2
Chamberlain	1	-

Football Combination

Hicks	3	-
Turner	2	-
Hellin	5	-
Dawson	5	-
Smart	3	-
McPherson	5	-
Harber	5	-
Shergold	2	-
Darcy	1	-
Stevens	5	6
Leggett	5	2
Chamberlain	5	1
Weaver	3	1
Rogers	4	-
Colsell	1	-
Atkins	1	-

STAND TICKETS

Tickets for seats in the Old and New Stands may be booked in advance. Postal applications should be accompanied by a remittance and stamped addressed envelope. Tickets ordered by telephone must be collected not later than 12 noon on the day of the match, otherwise they will not be reserved.

Prices for League Matches:-

New Stand: Block C-6/6 (Centre)

Blocks B and D-5/6 (Side Stands)

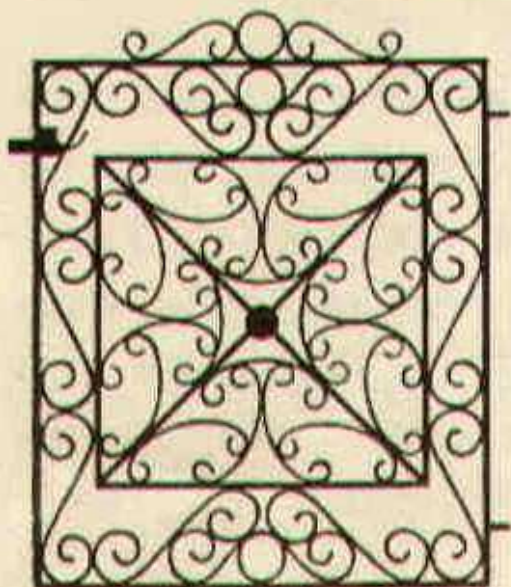
Blocks A and E-4/6 (Wing Stands)

Old Stand: Centre Box-8/-

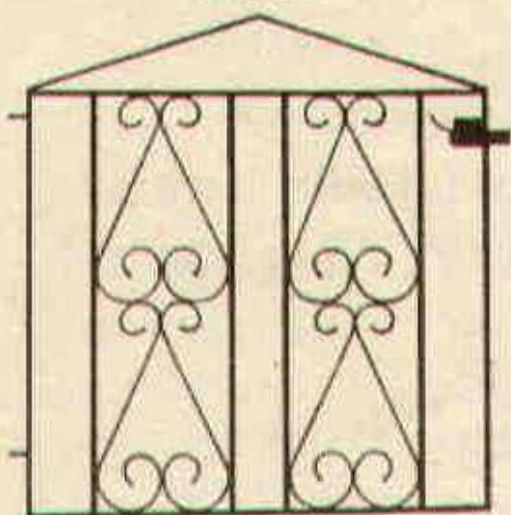
Block H-5/6 (Centre)

Blocks F, G and I-4/- (Side Stands)

Postal applications to: Secretary, Swindon Town F.C., County Ground, Swindon, Wilts. Telephone Swindon 22118.



T.G. 621



T.G. 626

Gates from 58/-
Singles and Doubles

If you live in the Swindon
area we will measure your
Gateway for you.

Our Decorative Ironwork
also includes:

FIRESCREENS
COFFEE TABLES
LAMPS
BRACKETS
CORNER TABLES
BALUSTRADES

SEND FOR FREE CATALOGUE
MARTYN LYNSHAW LIMITED

20 Boundary Works, Stratton Road,
SWINDON. TEL. 4177